

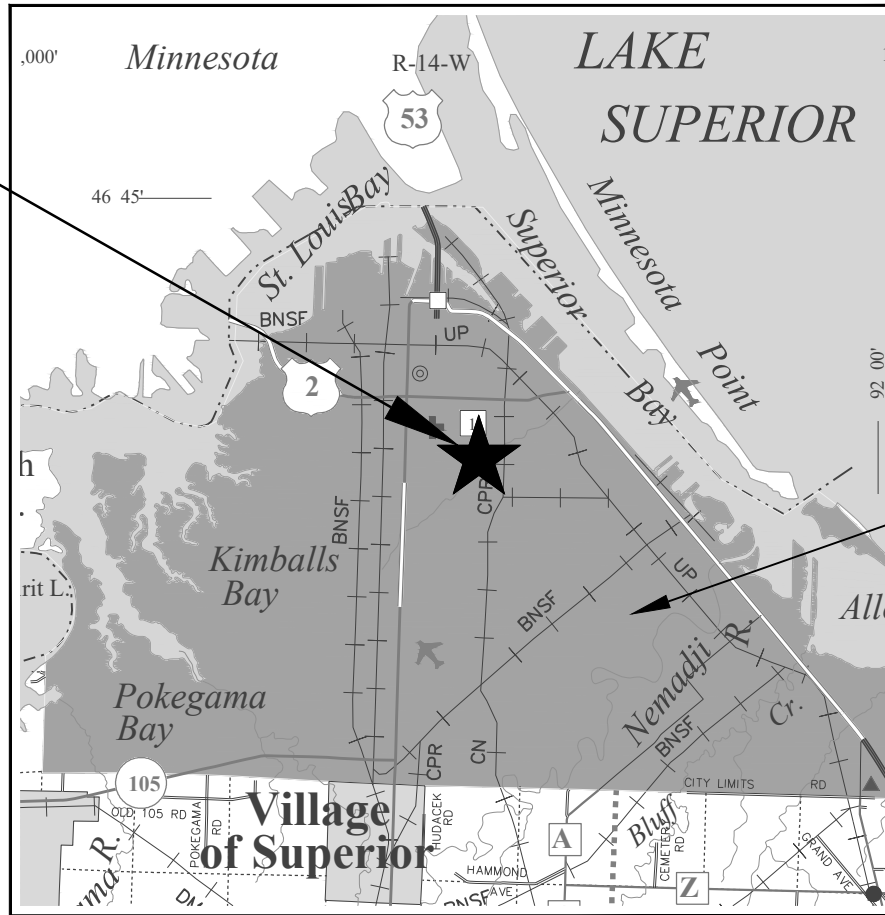
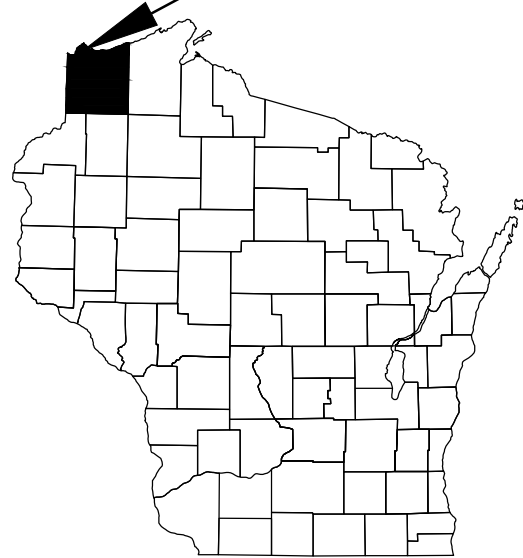
G:\2024\proj\24115062\CAD\Sheets\NWT\Tech\Superior_Title.dwg

NORTHWOOD TECHNICAL COLLEGE PARKING LOT SEALCOAT SUPERIOR, WI

INDEX OF SHEETS

SHEET NO.	DESCRIPTION
1	TITLE SHEET
2	SITE PLAN & DETAILS

PROJECT LOCATION



LOCATION SKETCH

SCALE 0 2 MILES

CITY OF SUPERIOR

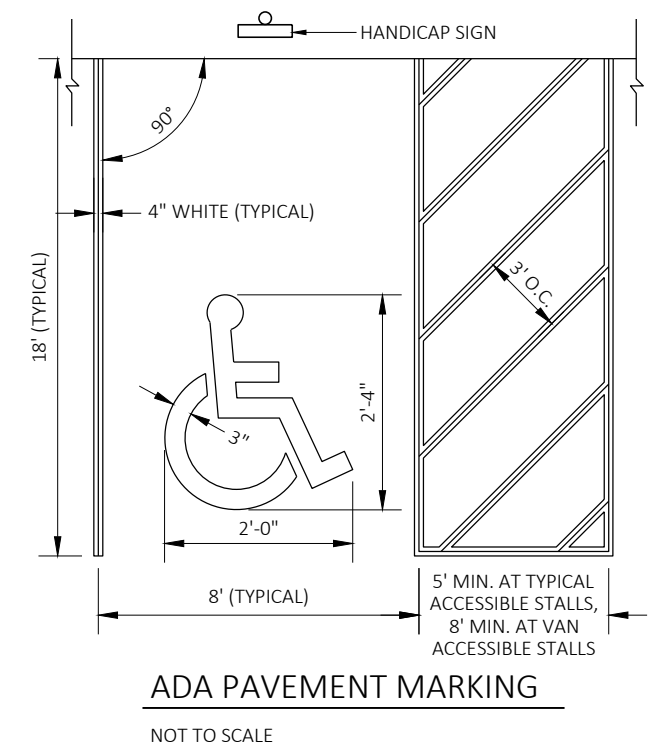
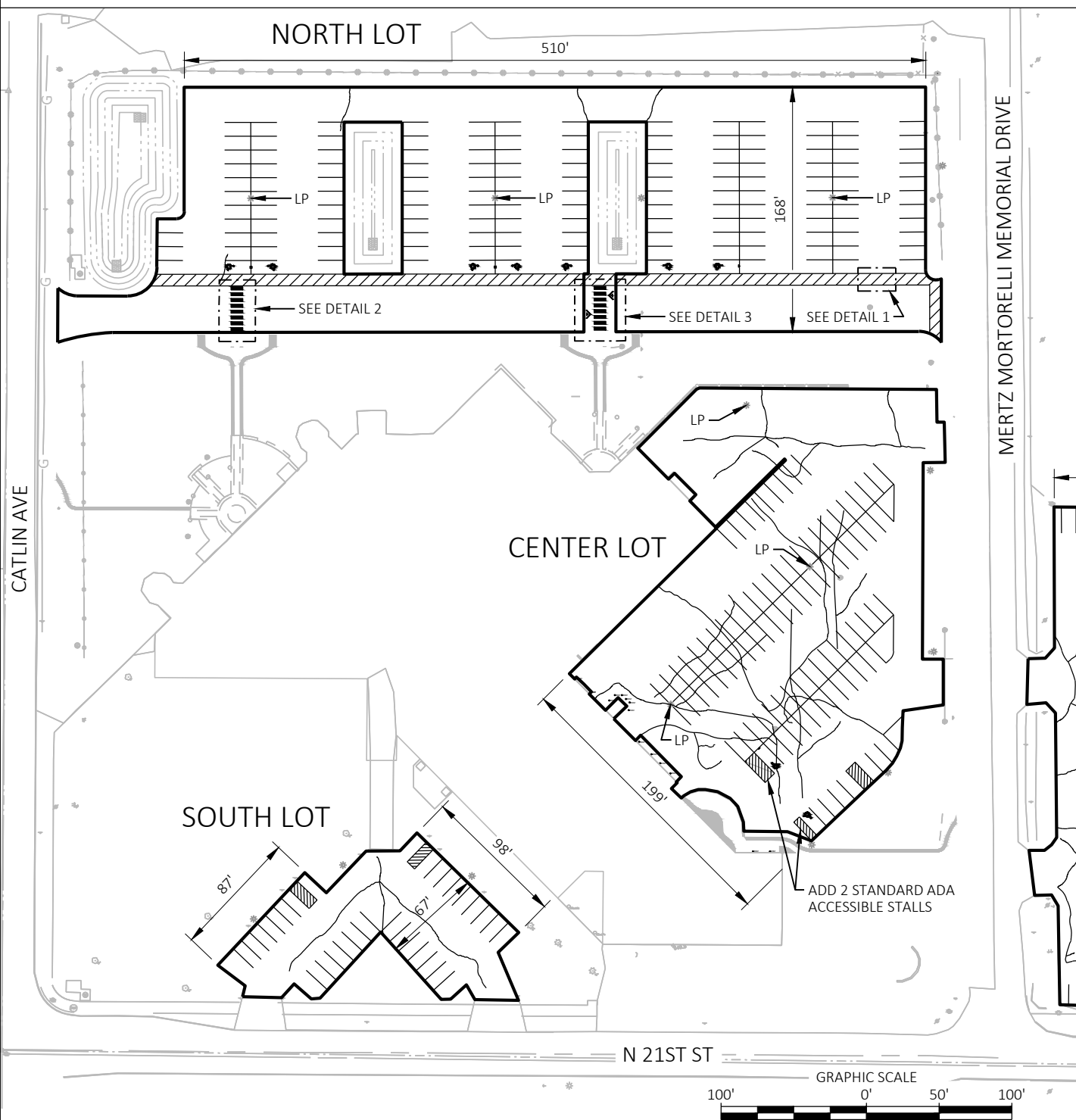
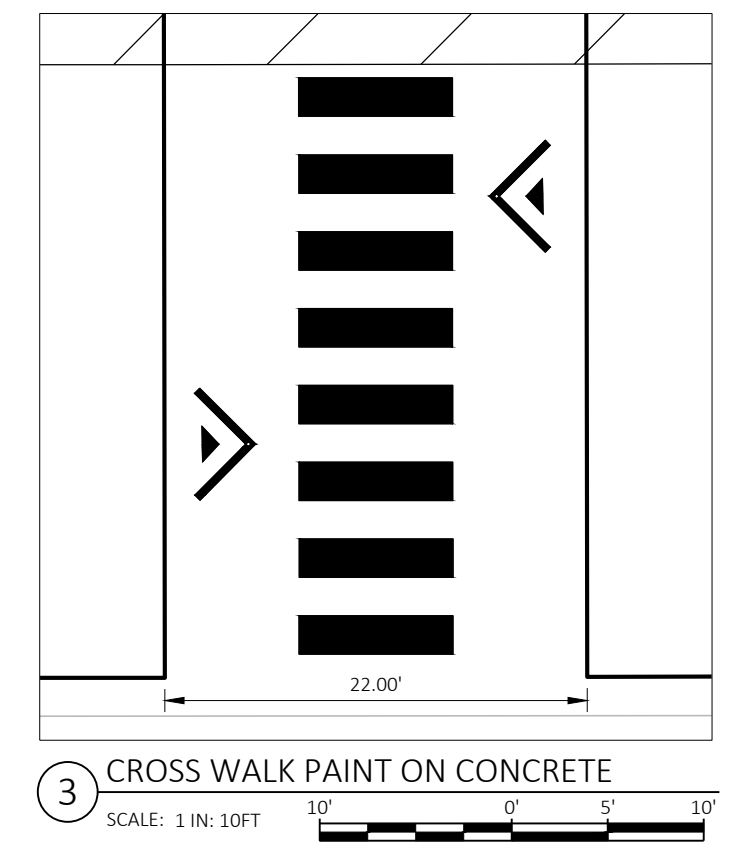
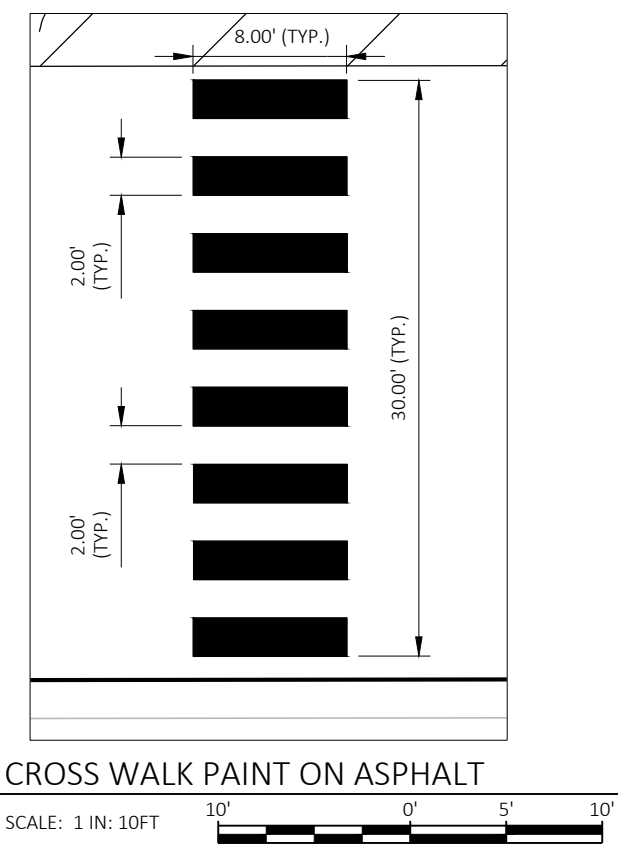
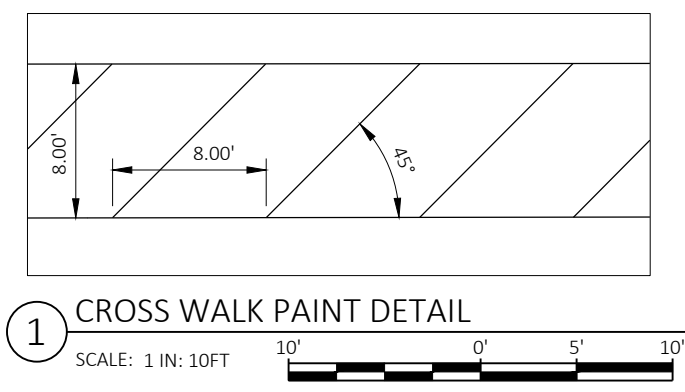
PREPARED BY
 Project Manager SCOT BALSAVICH, P.E.
 Checked By SJB
 Approved By SJB

PLOT DATE: May 17, 2024 - 03:16pm

			CEC PROJECT NO. 24115062	PROJECT MANAGER SCOT BALSAVICH, P.E.	COOPER ENGINEERING	2600 COLLEGE DRIVE, P.O. BOX 230 RICE LAKE, WISCONSIN 54868-0230 TELEPHONE (715) 234-7008 FAX (715) 234-1025	NORTHWOOD TECHNICAL COLLEGE SUPERIOR, WI	PARKING LOT SEALCOAT TITLE	SHEET 1
NO.	BY	DATE	REVISIONS	DRAWN BY TAG	CHECKED BY SJB	ISSUE DATE 4/1/2024	APPROVED BY SJB		

G:\2024\proj\24115062\CAD\Sheets\NWT\redsuperior_Parkinglots.dwg

- NOTES:**
- 4" PAINT LINE WIDTH UNLESS NOTED OTHERWISE.
 - TOTAL ACCESSIBILITY SYMBOLS: 9
 - MOTORCYCLE TRAINING COURSE PAINT LINE LENGTHS FROM EAST LOT NOT INCLUDED.



	NORTH LOT	CENTER LOT	EAST LOT	SOUTH LOT	TOTAL QUANTITIES	
ASPHALT AREA	80,453 SQ FT	53,702 SQ FT	106,301 SQ FT	13,353 SQ FT	TOTAL ASPHALT AREA	253,809 SQ FT
PAINT LINE LENGTH	4,956'	2,621'	6,256'	790'	TOTAL PAINT LINE LENGTH	14,623'
ESTIMATED LENGTH OF CRACKS	106'	1,626'	2,569'	255'	TOTAL CRACK LENGTH	4,556'

PLOT DATE: May 17, 2024 - 03:16pm